



HSY

Carbon neutrality programme

Helsinki Region Environmental Services Authority

Helsingin seudun ympäristöpalvelut –kuntayhtymä HSY

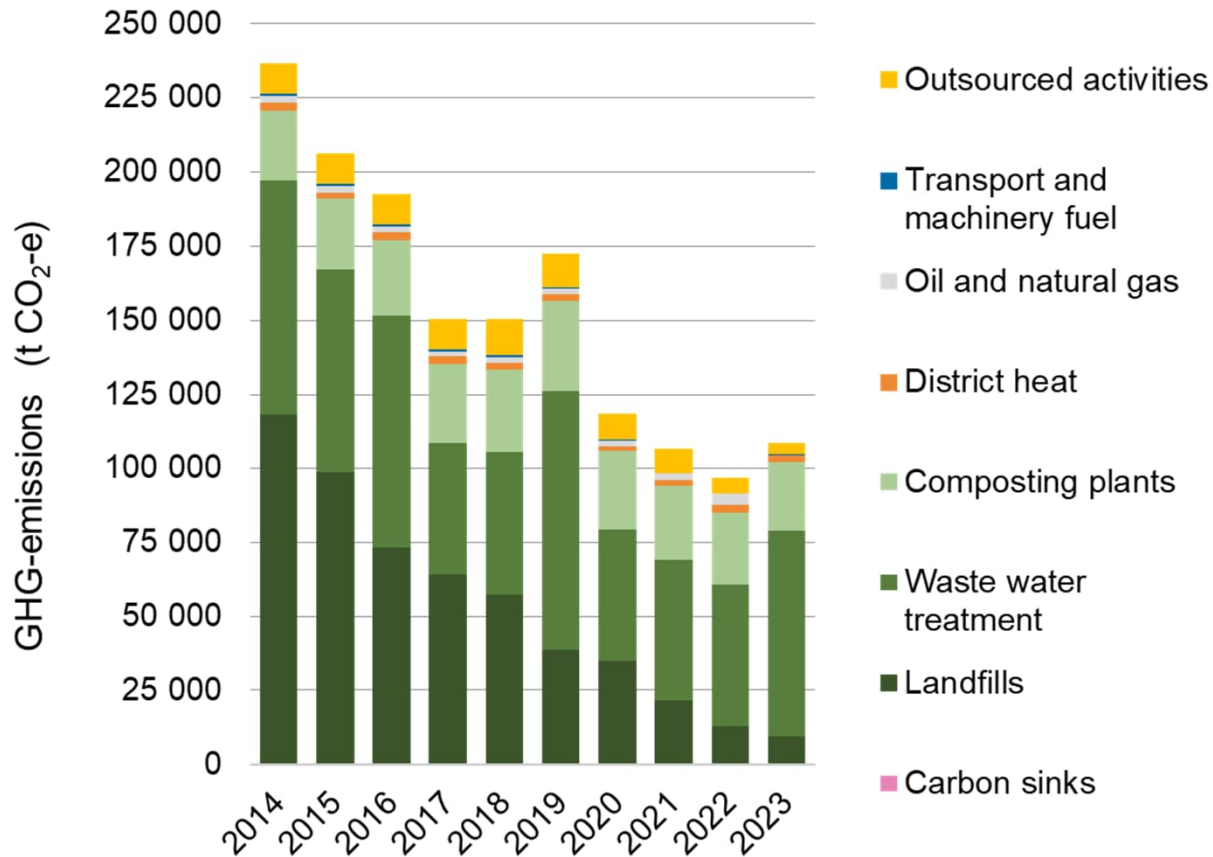
Summary

6.5.2024

Vision: Together we will create the world's most sustainable metropolitan area

Strategic focus areas	Strategic objectives	Objective 2030
Environmental responsibility	<p>Carbon-neutral Helsinki Metropolitan Area</p> <p>At the center of the circular economy</p> <p>Clean Baltic Sea</p>	<p>Carbon-neutral water services and waste management. Climate resilient Helsinki Metropolitan Area.</p> <p>The amount of mixed household waste is reduced. HSY promotes the circular economy in the region.</p> <p>The nutrient load on water systems is reduced.</p>
Changing work	<p>Employer that attracts and retains employees</p> <p>Competent and developing personnel</p>	<p>The personnel is motivated and recommends HSY as a workplace. We provide a great employee experience.</p> <p>Meaningful and evolving tasks, the ability to change and cooperation serve as the basis of our operations and support our expertise.</p>
Sustainable finances	<p>Efficient and economical operations</p> <p>Stable finances</p>	<p>Services are produced sustainably and more efficiently than at present.</p> <p>The incurrence of additional debt has been brought to an end. Investments can be financed by water and service fees.</p>
Resident experience	<p>Sustainable and developing services</p> <p>Secured drinking water</p> <p>Taking care of the surroundings</p>	<p>Services are smooth, multi-channel and accessible.</p> <p>Preparedness for disruptions and operational reliability are at an excellent level.</p> <p>We promote the good state and diversity of the surrounding environment.</p>

GHG-emissions from our activities have decreased in recent years

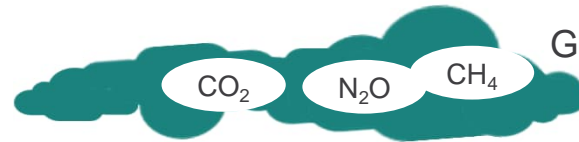


- Total ghg-emissions of HSY were 109 000 tCO₂ in 2023, emissions have decreased over 50 % since 2014
- Approx. 85 % of our emissions are related to waste and WWT-tasks, only 15 % are energy related ghg-emissions
- Direct emissions include the emissions from landfills (CH₄), waste water treatment (CH₄, N₂O) and composting plants (CH₄, N₂O) as well as the emissions from fossil fuels and energy use (CO₂)
- Emissions from outsourced activities are mainly related to energy use in various material handling and transport tasks
- Carbon sinks worth of 83 tCO_{2e} were established in biochar-pilot in 2023

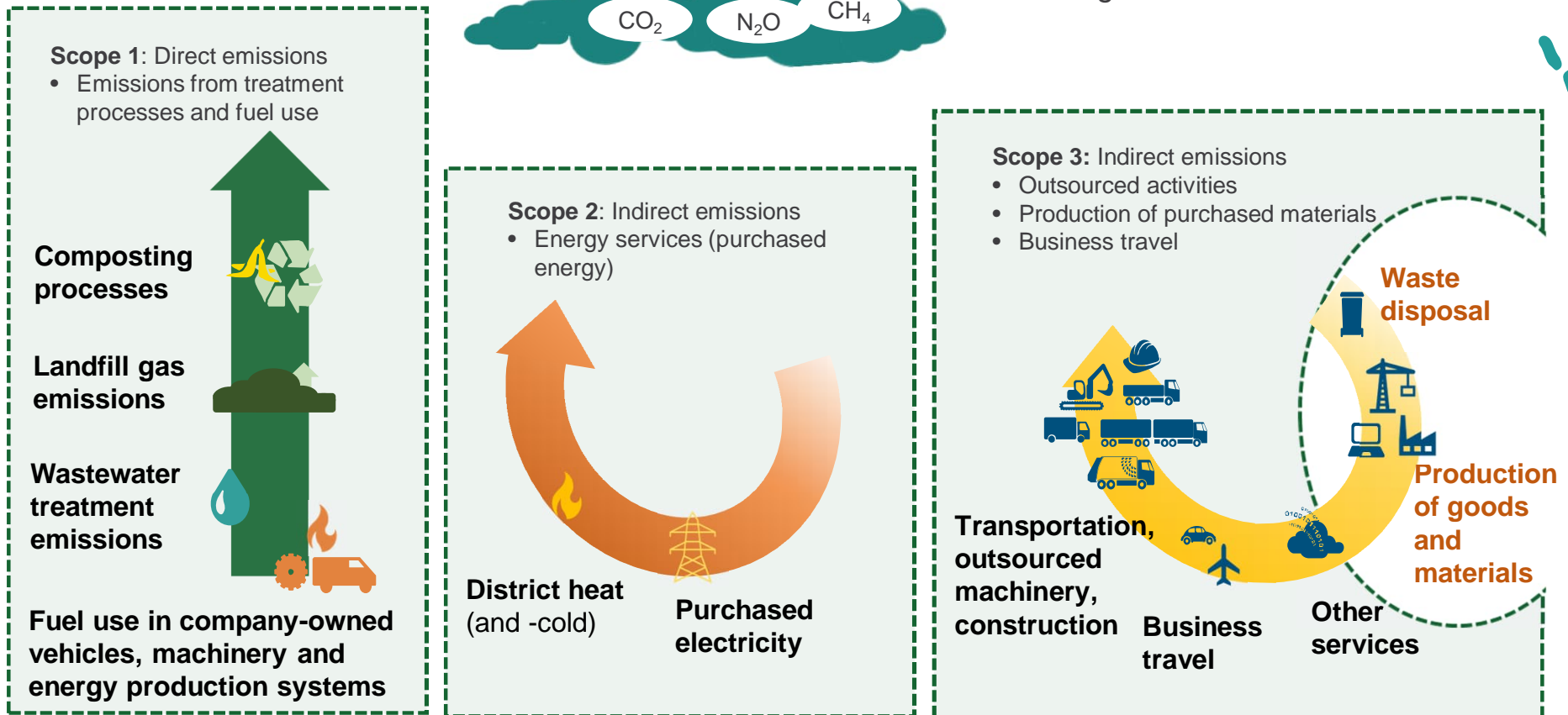
Main emission sources

Carbon footprint

- E.g. biochar from sludge



Greenhouse gas emissions



Carbon-neutral Helsinki Metropolitan Area



HSY's carbon neutrality programme, main focus areas

- Reducing greenhouse gas emissions from treatment processes and energy use
- Carrying out projects that improve energy efficiency
- Exploring the opportunities for carbon sequestration in our treatment operations
- Investing in research, development and innovation as well as in project activities supporting our climate targets.
- Reducing emission from construction, -sites and procurements
- Promoting regional climate cooperation and achievement of the climate targets of the Helsinki Metropolitan Area through information, analyses, guidance, communication and other project activities

Objective

- Carbon-neutral water services and waste management
- Climate resilient Helsinki Metropolitan Area

Indicator

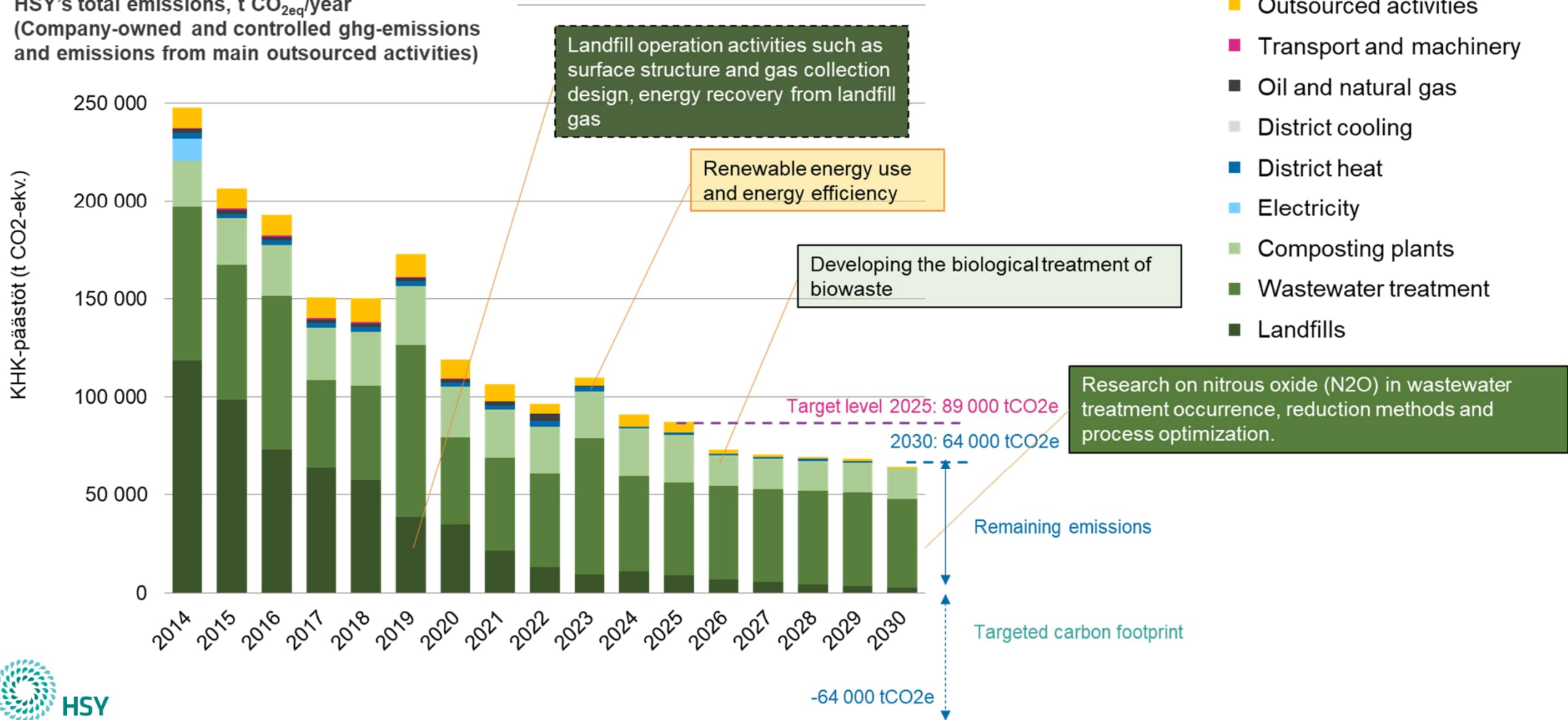
HSY's total emissions, t CO₂eq/year (Company-owned and controlled ghg-emissions and emissions from main outsourced activities)

- 2025: -56% since the 2016 level, 89,000 t CO₂/year
- 2030: -67% since the 2016 level, 64,000 t CO₂/year
- 102,000 t CO₂eq in 2023

Action plan overview

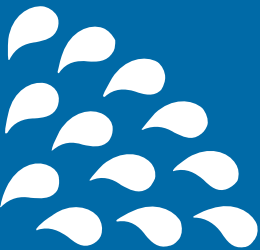
Indicator

HSY's total emissions, t CO_{2eq}/year
(Company-owned and controlled ghg-emissions and emissions from main outsourced activities)



Puhtaasti parempaa arkea | En rent bättre vardag | Purely better, every day

Find more information about our indicators [here](#).



More information:
Juha Viholainen
Energy efficiency Manager
juha.viholainen@hsy.fi
050-4761237

Helsingin seudun ympäristöpalvelut -kuntayhtymä
Samkommunen Helsingforsregionens miljötjänster
Helsinki Region Environmental Services Authority